



LUUA METSANDUSKOOOL
metsandus aiandus turism

Welcome to Luua Forestry School





Introduction

- Luua Forestry School is the only vocational school in Estonia specialising in different **forestry-related subjects**.
- Since 1948, the school has offered education in **the area of forestry**.
- The study **fields of horticulture and nature tourism** have been mainly developed during the last decade.





Facts and Figures



LUUA METSANDUSKOOL
metsandus aiandus turism

- ~ 590 students
 - 400 in field of forestry
 - 140 in field of horticulture
 - 50 in field of nature tourism
- ~ 90 employees
 - teaching staff – 33
- 700 adults attend the training courses annually
- 5000 alumni





MISSION

With a learner-centred approach and by instilling an attitude of valuing nature, we ensure Estonia will have the best and brightest future stars.

VISION

We are the first choice for students who value nature - as the centre of excellence in professional forestry we are committed to pioneering innovation.

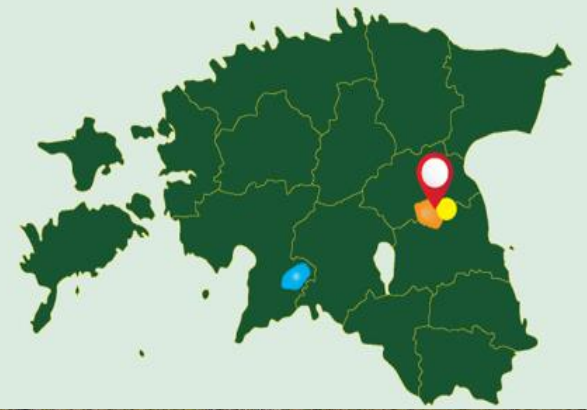
VALUES

- TRUST - we know that we are supported and will support others.
- EMPATHY - we understand and be compassionate.
- RESPONSIBILITY – we make decisions considering the consequences.





Everything in one place



- The forest management district around the village Luua and the village Tihemetsa (ca 9000 ha)
- The nursery-arboretum (ca 9ha, with 700 species)
- Study and training facilities
- **Free time facilities:** cafeteria, library, festive hall, gym, stadium, bike rental, active student board.





A lot of practice



LUUA METSANDUSKOOL
metsandus aiandus turism

The study hall:

- Hall for the landscape construction work and for woodworking
- Training ground for the future arborists

- Since 2021 we have had a new, spacious and modern training hall for forest machinery studies.
- Better possibilities to learn preliminary forest machinery skills on computer imitators and simulators.





Luua manor

- We have 3 dormitories
- The new school hostel was built on the first floor of the 300-year-old manor house.
- We treated the estate with honour and respect and have carefully preserved the atmosphere of bygone eras.

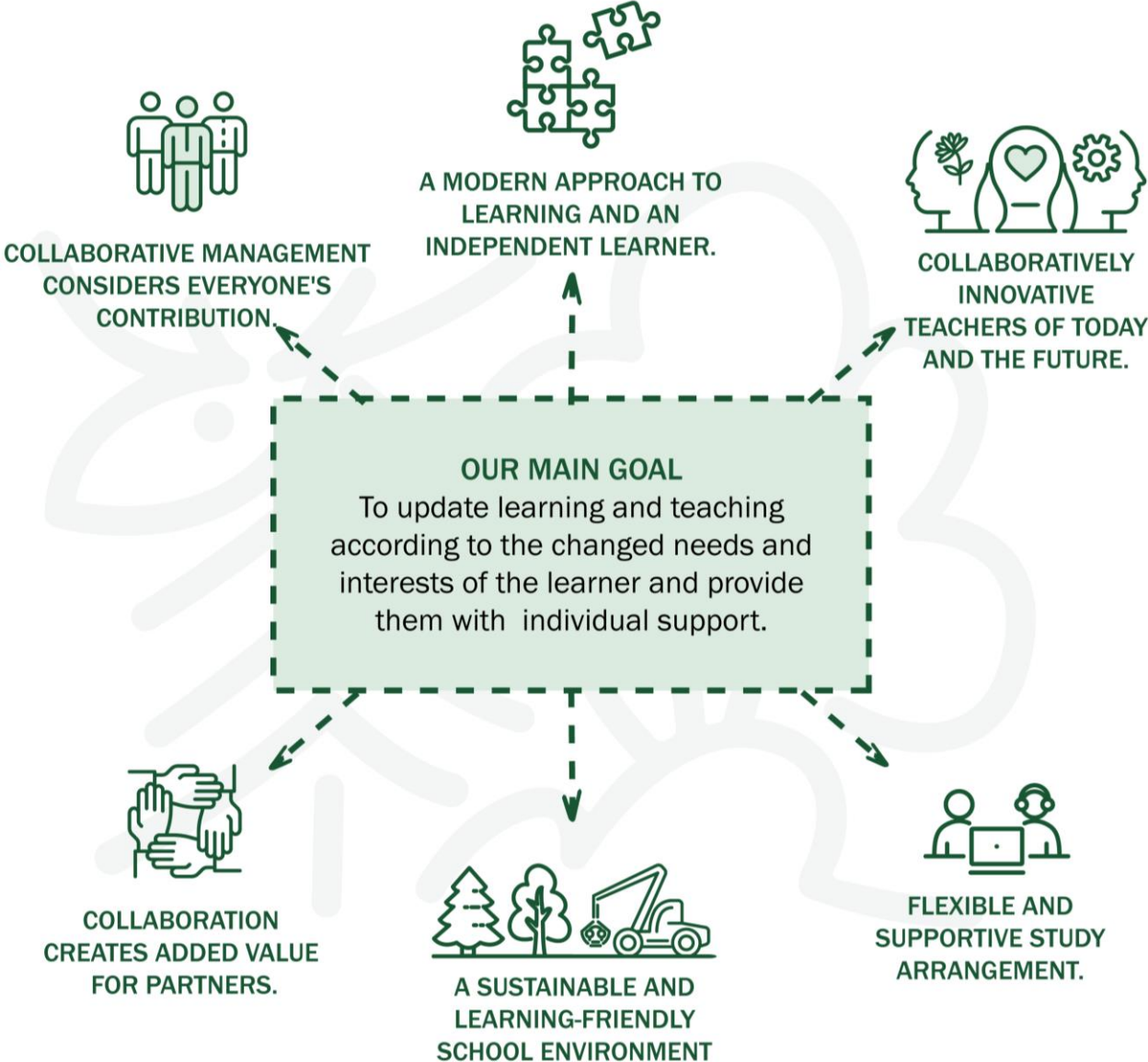




THE OBJECTIVES OF THE 2022-2025 DEVELOPMENT



LUUA METSANDUSKOOL
metsandus aiandus turism

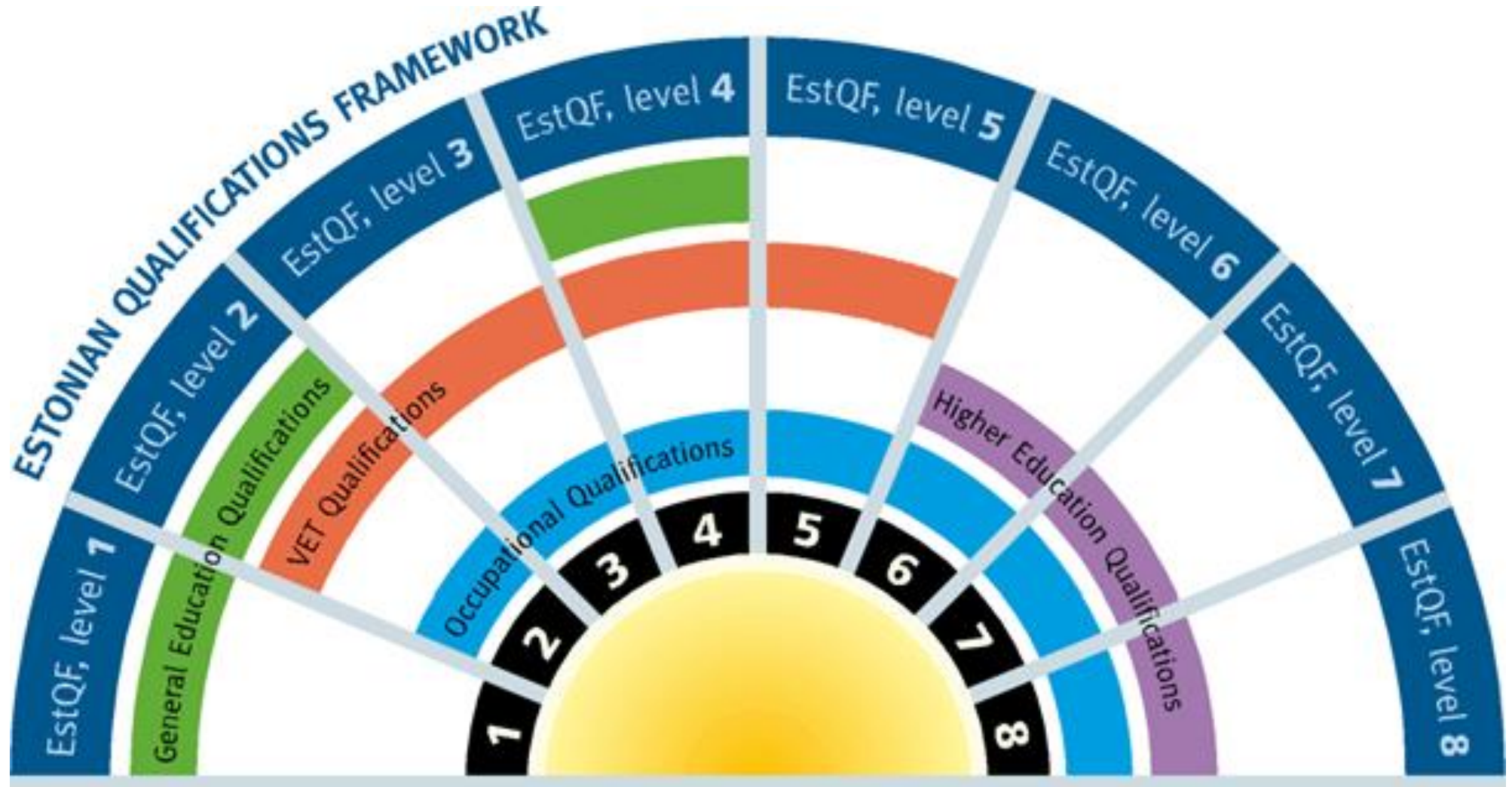




Education system



LUUA METSANDUSKOOL
metsandus aiandus turism





Studies



- Full-time day study programmes (5 days a week).
- Session study programmes (3-4 days, once a month).
- Employment-based study programmes.
- Study programs are from the Levels 3-5 (EstQF).
- The period of the studies: 1-3 years.

- Scholarships offered by employers or by the school.
- All programmes taught in Estonian.

- We cooperate in the field of learning mobility with different schools from Finland, Latvia, Belgium and Austria.



Our specialities



LUUA METSANDUSKOOL
metsandus aiandus turism

- Silviculture
- Forest worker
- Forest technician
- Forest specialist
- Arborist
- Dendrologist
- Forwarder operator
- Harvester operator
- Landscape gardener
- Tree nursery gardener
- Nature tour guide





Forest worker

A forest worker is a skilled worker who manages independently and, if necessary supervises his team in work related to forestry and timber harvesting, based on the goal set.

He is responsible for the results of his and the team's performance.

A forest worker uses and maintains brush-wood saws and chainsaws, is successful as a logging worker and can handle the main silvicultural work.



LUUA METSANDUSKOOL
metsandus aiandus turism





Forest technician

A forest technician works in organisations dealing with forest surveys and forest management (companies, public authorities, forest associations, etc.).

He knows the forest as an ecosystem well. A forest technician inventors the forest and prepares a forest management plan.





Silviculture specialist



LUUA METSANDUSKOOL
metsandus aiandus turism

A silviculture specialist is familiar with various forestry operations and knows the life cycle of the forest.

He reforests, grows and protects the forest, and also acquires basic knowledge about fellings and timber measuring.

The speciality is suitable for a private forest owner, but also a person working in forestry without a forestry education. We recommend continuing your studies in the field of forest technician.





Forestry specialist

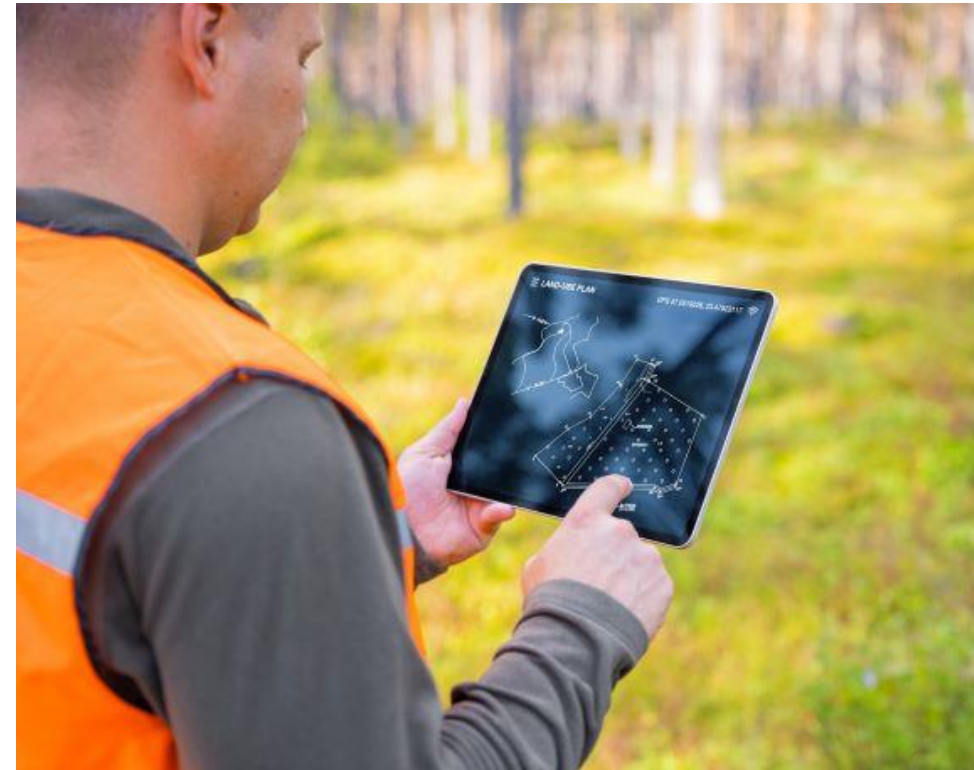


LUUA METSANDUSKOOOL
metsandus aiandus turism

A forest management specialist works in organisations active in forestry and timber harvesting (both in the private sector and in the state agency, also NGOs).

They know the forest as an ecosystem well and manage forests sustainably and prudently.

A forestry specialist plans and organises forest management work and verifies the quality of the work performed. His job involves forest management, timber harvesting and transportation.





Harvester operator



LUUA METSANDUSKOOL
metsandus aiandus turism

A harvester operator is a skilled worker who performs work related to forest and timber harvesting, in view of natural conditions and the principles of sustainable forest management.

The main tool is a harvester, deforestation machine equipped with a hydraulic manipulator and cutting head.

An operator is responsible for selecting the trees to be felled, felling, cutting to the desired length and debranching material into timber assortment.

His work ensures ecological and economic sustainability of forests in view of the optimal economic result.





Forwarder operator



LUUA METSANDUSKOOL
metsandus aiandus turism

A forwarder operator is a skilled worker who performs work related to forest and timber harvesting, regarding natural conditions and the principles of sustainable forest management.

A forwarder operator is responsible for timber transporting and stack building in a storage site with a forwarder (a machine with a hydraulic manipulator for timber transport).

He evaluates the quality of the timber assortment and keeps records of the quantities of timber.



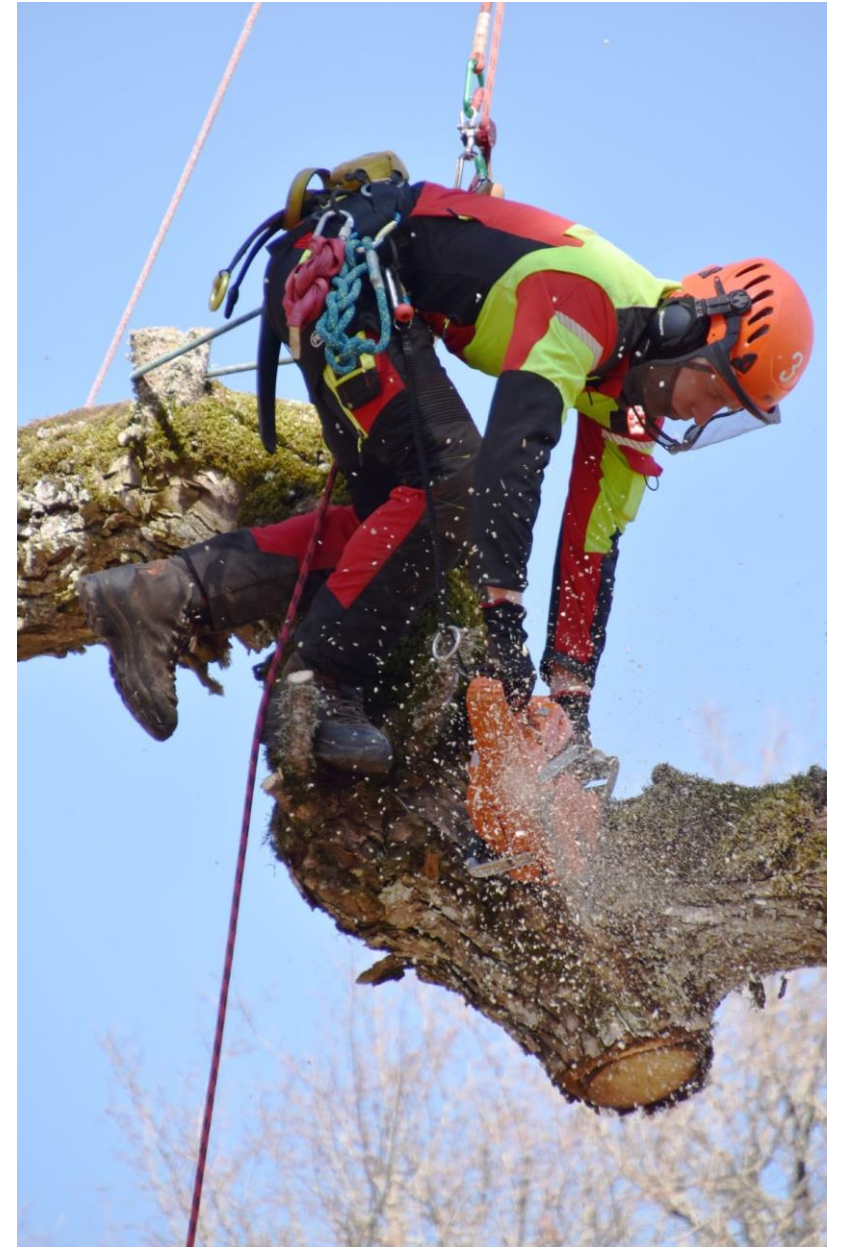


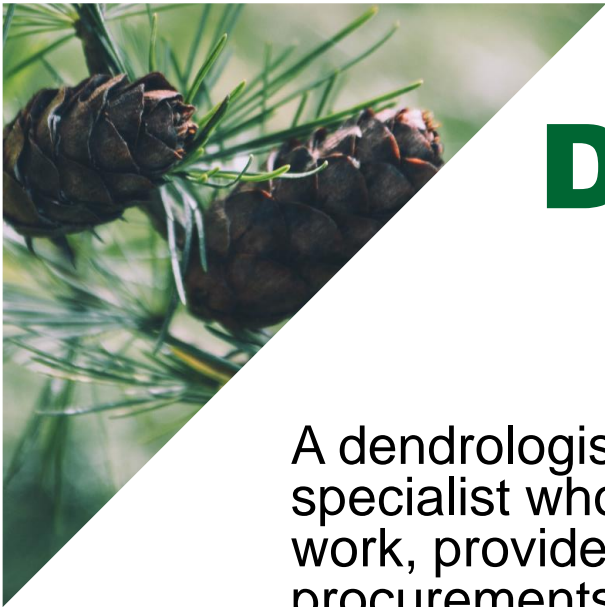
Arborist

An arborist is a qualified worker who plants trees in densely populated areas and maintains them over their lifespan.

The objective of the arborist is to ensure that the trees are as healthy as possible and provide people with a safe and aesthetic living environment.

An arborist makes independent decisions regarding tree care based on the tasks or projects assigned to him/her, the trees' biology and the professional ethics of the arborist.





Dendrologist



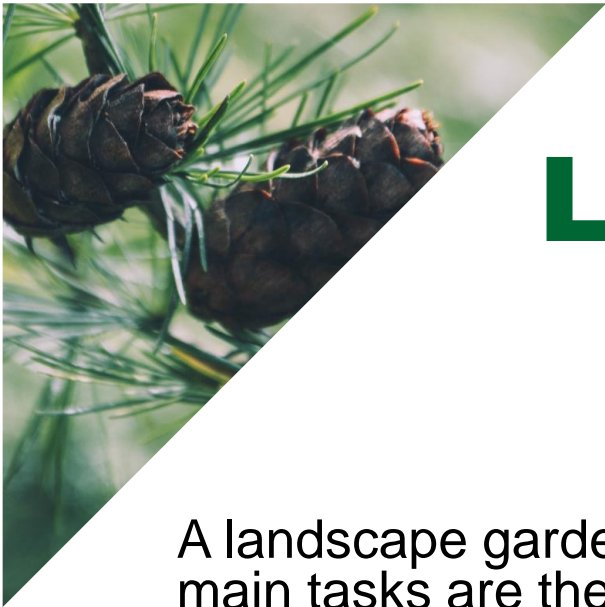
LUUA METSANDUSKOOL
metsandus aiandus turism

A dendrologist is a highly experienced specialist who supervises tree maintenance work, provides professional advice about procurements.

His job includes supervising the maintenance and planting of trees and the implementation of conservation measures on construction sites.

He assesses the condition and value of woody plants, records the assessment results, gives recommendations relating to tree maintenance and produces expert opinions.





Landscape gardener

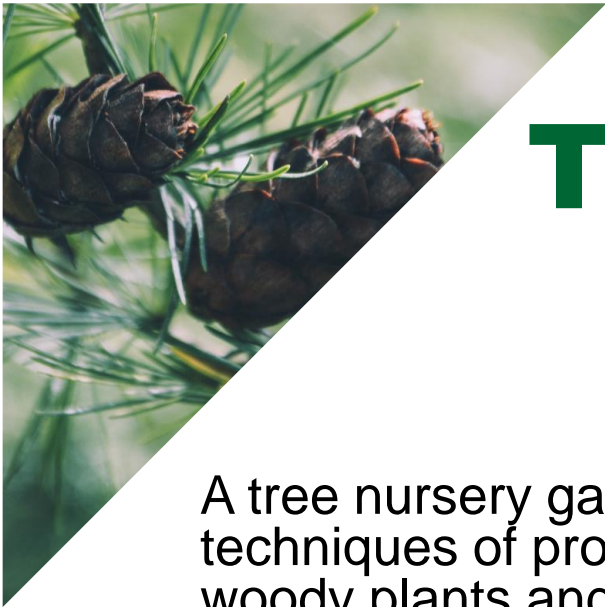


LUUA METSANDUSKOOL
metsandus aiandus turism

A landscape gardener is a skilled worker whose main tasks are the establishment of a garden or green area according to the project (laying paving stones, establishing lawns and planting areas, constructing walls and small wooden structures, planting large trees) and maintenance.

He works for a landscape company, garden centre, nursery, construction company, property maintenance company, local government, etc. The work is varied and mainly takes place outdoors.





Tree nursery gardener



LUUA METSANDUSKOOL
metsandus aiandus turism

A tree nursery gardener is familiar with the techniques of propagation and cultivation of woody plants and herbaceous ornamental plants.

He collects and plants seeds, makes cuttings, grafts, divides plants, knows how to maintain young plants, prunes the tree crown and trims the root system.

A tree nursery gardener is familiar with the production technologies of seedlings and tree nursery management issues, so he can work in a tree nursery or be as an entrepreneur.





Nature tour guide



LUUA METSANDUSKOOL
metsandus aiandus turism

A nature tour guide maintains an overview of Estonian nature, hiking and nature trails, also the basics of hiking and organising it, including being able to anticipate risks and deal with dangerous situations.

A nature tour guide is a lifelong learner who learns through his own experiences and those of others.

He is initiative-driven, owns an entrepreneurial mindset and often works as a small entrepreneur.





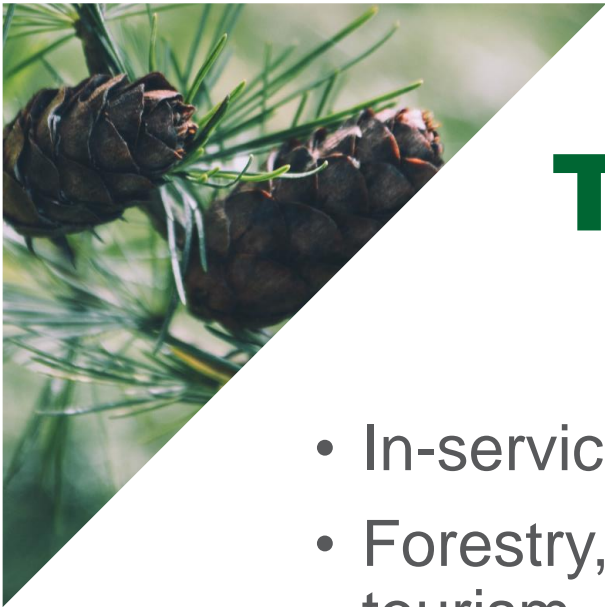
Apprenticeship Scheme



LUUA METSANDUSKOOOL
metsandus aiandus turism

- Our 360-degree traineeship system has been recently awarded
- Partnership with companies all over Estonia
- Possibility to make traineeship close to the home
- In the end of the traineeship – 360° feedback and report
- A recommendation from the representative of the company – whether to hire or not.

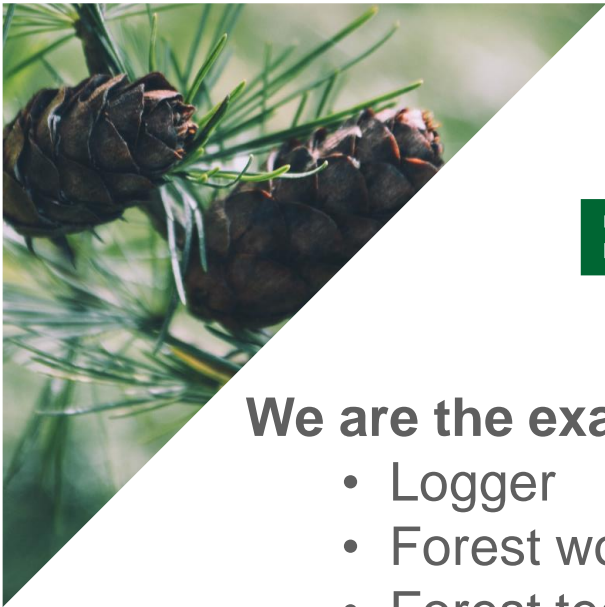




Training centre

- In-service and re-training courses.
- Forestry, horticulture and nature tourism.
- In addition: entrepreneurship, computer, language, psychology courses etc.
- The study programmes of courses are developed proceeding from the needs of the labour market as well as the client's wishes.





Examination centre



LUUA METSANDUSKOOL
metsandus aiandus turism

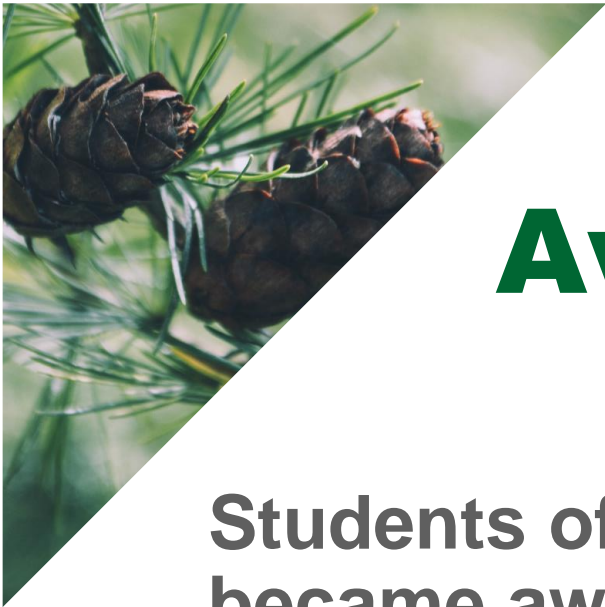
We are the examination centre for labour market:

- Logger
- Forest worker
- Forest technician
- Forestry specialist
- Forwarder operator
- Harvester operaator
- Timber truck driver
- Arborist
- Dendrologist

Awarding Bodies:

- Estonian Forest and Wood Industries Association
- Estonian Arboricultural Society





Awards

Students of Luua Forestry School became awarded places:

- Skills competitions in Estonia (Forestry and Horticulture);
- Forestry Skills Competitions in the Baltics and Europe;
- Wordskills etc.





LUUA METSANDUSKOOOL
metsandus aiandus turism

Thank you!

Enjoy your stay!

www.luua.ee

Facebook: Metsanduskool

Instagram: #metsanduskool

